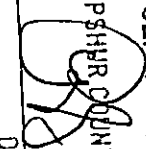


August 30, 2022

Honorable Terri Ross
Upshur County Clerk

FILED
TERRI ROSS
COUNTY CLERK
2022 SEP 15 PM 4:09
UPSHUR COUNTY, TX.
BY  DEPUTY

Imaging and Indexing of Deeds of Trust and Mechanic's Liens

SUBMITTED BY:
Stacy Cortesano
Account Executive
stacy.cortesano@kofile.com
(972) 984-8508

Kofile 

6300 Cedar Springs Road, Dallas, TX 75235
p: 214.442.6668 | f: 214.442.6669
info@kofile.com | www.kofile.com

Dear Honorable Terri Ross,

This proposal addresses Upshur County Clerk's Deed of Trust and Mechanic's Liens and is presented by Kofile Technologies, Inc. (Kofile). Quoted services include imaging and indexing. This assessment also contains photographic documentation of the volumes in their current state. Note that prices for the inventory herein are good for 90 days from the date of this assessment.

Kofile Technologies, Inc. (Kofile) is uniquely qualified to complete Upshur County Clerk's modernization goals by taking an innovative approach to this project to ensure a successful outcome. Kofile's basis for success is decades of experience, realistic solutions, and professional analysis and each project is unique and deserves special attention. Our team provides realistic solutions, professional analysis, and innovative archival products to equip records stewards with the information and resources needed to preserve collections.

ARCHIVAL DIGITIZATION

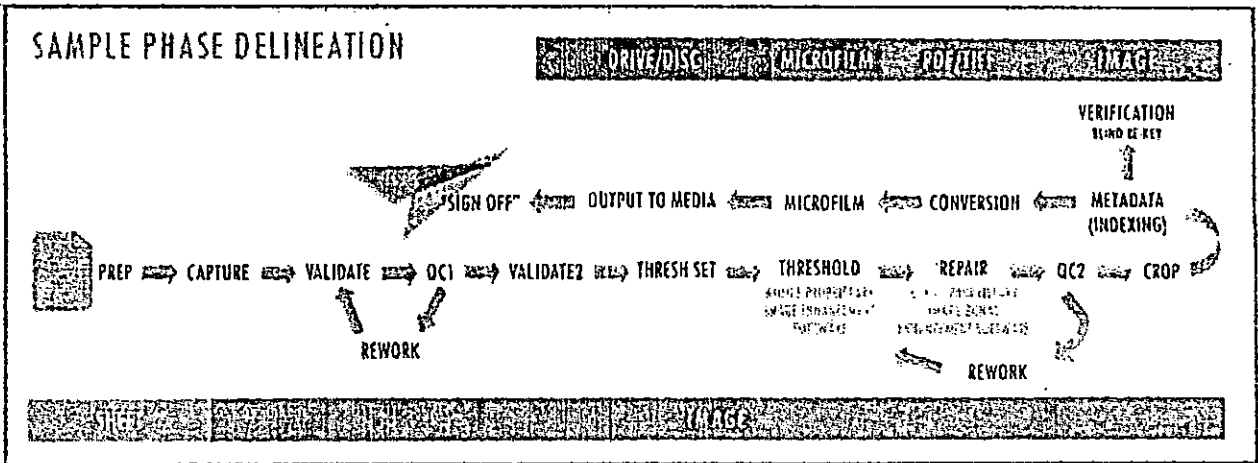
Imaging a document and digitizing a collection creates an electronic representation of the original archival record. This process is

not meant to replace the archival record, but to aid in its preservation. The image serves as a reference tool and is a back-up if the original is damaged or destroyed.

Archival digitization includes capture and processing (custom image enhancement and cleanup) and optimization for access. Security backups are captured on archival microfilm with a Life Expectancy (LE) of 500 years.

Kofile's services are unique because materials are addressed according to their conditions and fold endurances without blind, automatic scanner feeds. Technicians are trained to handle fragile and historical documents and use the best hardware and software available. Many projects involve re-work for collections already imaged or indexed by low-bid vendors. With Kofile, images are the highest quality and are free of distortion and loss of information due to image capture.

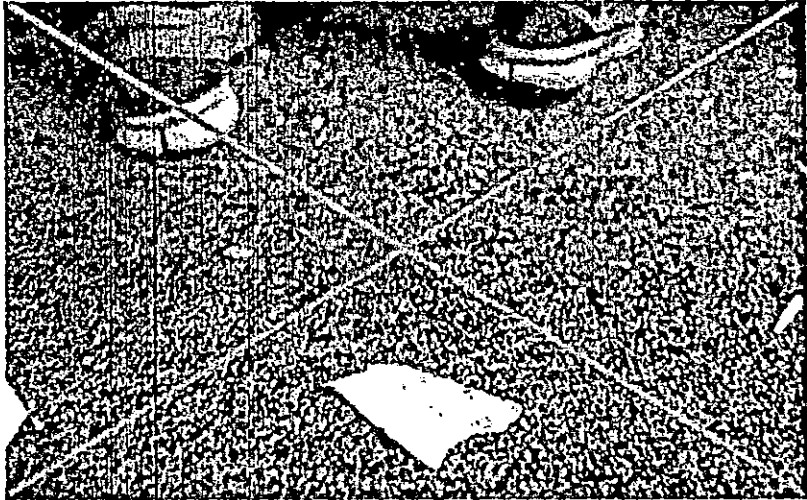
Kofile always defaults to U.S. National Archives and Records Administration (NARA) technical guidelines for digitization. Upon request, Kofile stores an electronic security back up of all images in case of loss, damage, or destruction by fire or natural disaster.



IMAGING OVERVIEW

Operators observe each page during capture. For faint or illegible pages, the operator marks the page, readjusts the scanner, and employs contrast tools. If unsuccessful, the operator indicates and inserts a review form for the quality assurance team to assess. The page is marked with a "Best Possible Image Indicator" or treated with further enhancements.

Images are captured at a minimum of 300 dpi at 256 bi-tonal or gray levels. This ensures the highest image quality for documents with poor contrast and difficult-to-read information. Images accumulate as Group IV bi-tonal images in a standard TIFF or PDF format. Images are optimized and scaled for system output.



The article implies that partial document destruction is normal. This is unacceptable and contrary to any preservation standard. Kofile has the experience and expertise to handle fragile documents and address the physical preservation of the source document.

Source: Higgins, Jessie. "Recorder's Office Preserving Oldest County Records by Digitizing Them: Some Century-Old Pages Crumble When Touched." Evansville Courier & Press, August 21, 2013.

IMAGE PROCESSING AND ENHANCEMENT

IMAGEPERFECT is Kofile's proprietary digital SLR-based software which utilizes proprietary algorithms, critical for capturing different densities and quality levels in a collection, to provide optimal quality and uniform images. Image Perfect measures each image at a minimum for the following attributes:

- White-on-white images
- Synchronizing images from different scanners
- Floating page cropping & segmentation
- Rotating & de-skewing images
- Tone correction
- Resolution adjustments
- Metadata Normalization

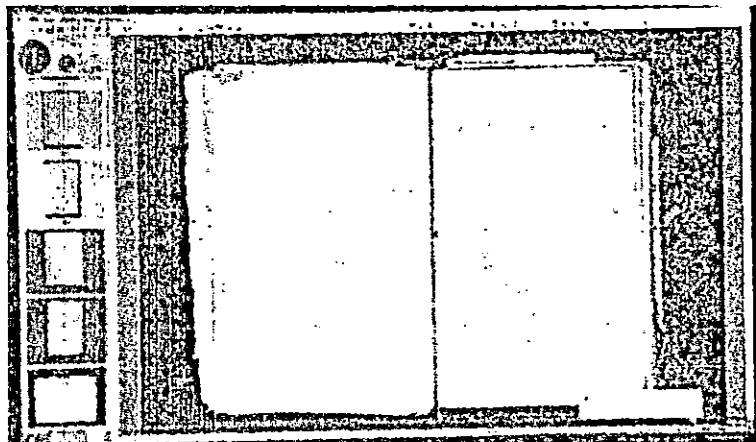
Kofile utilizes the Microsoft® SQL database as the underpinning for its production systems and IMAGEPERFECT allows operators to interactively build and edit image processing scripts, which can be saved for batch processing. Progress tracking capabilities can identify exceptions enabling supervisors to quickly and efficiently correct problems. This software automatically detects and compensates for a scanner(s) variances. The Assured Image delivers consistent, high-quality output.

IMAGEPERFECT enables repair of the currently displayed image without rescanning which could compromise image integrity, and uses custom image clean-up and enhancements such as deskew, despeckle, character repair, and zonal processing to improve legibility. Kofile maintains 100% document integrity and image control with exclusive image locking capabilities. The processing procedures will not allow for information from rescanned pages to cut and paste accidentally into the incorrect page.

Quality Targets permit operators to view image quality at scan. Images, even those scanned on different devices, are "normalized." Rather than using ad-hoc algorithms and tricks, this software measures image quality and propagates this data through the imaging chain. Quality Targets serve as the foundation for quality assurance analysis.

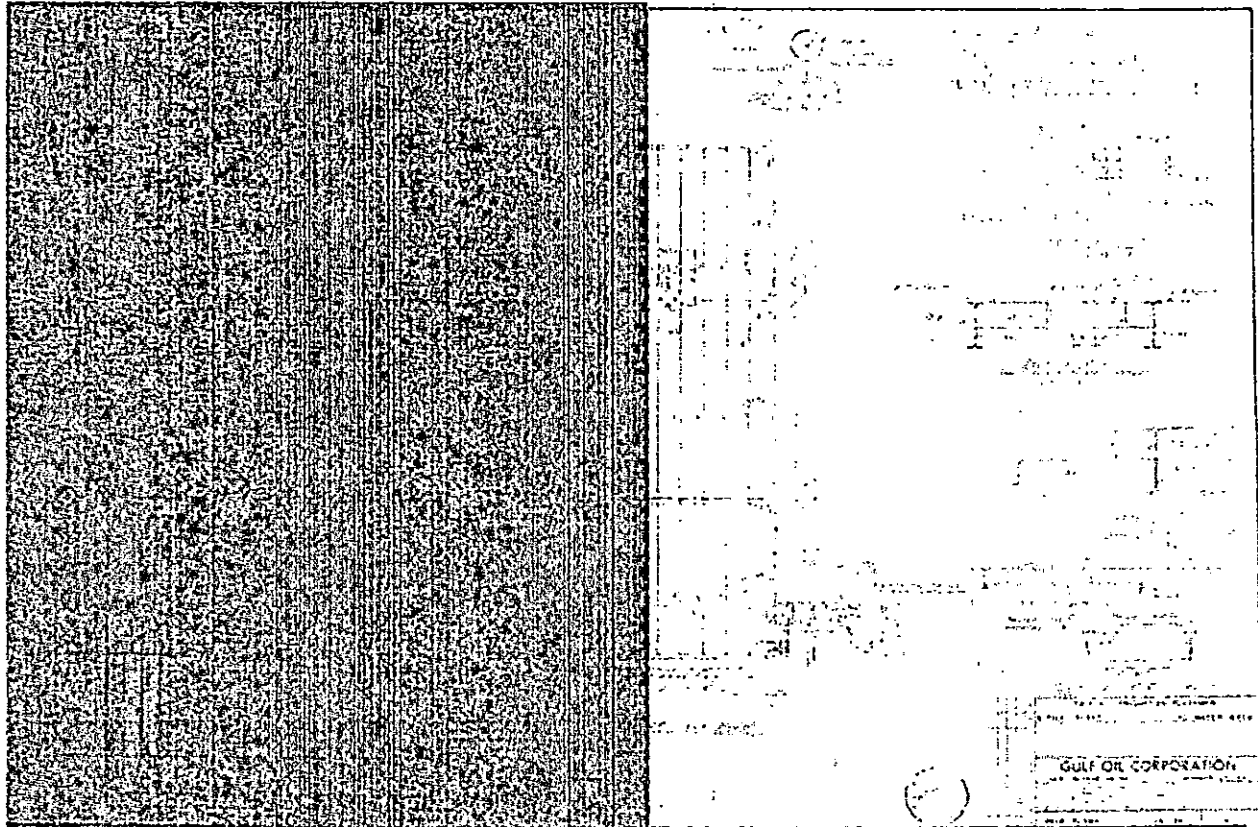
Quality Targets (pictured herein) establish the baseline digital capture quality of the scanner during scanning. Therefore, Kofile can measure the digitization physics at the time of capture. IMAGEPERFECT measures each image at a minimum for:

- Target dpi
- Target Tone scale & correction
- Color Management
- Brightness/Contrast Correction
- Gamma Adjustment
- White Balancing
- Page Orientation
- Exposure uniformity
- Color reproduction data



If applicable to the project, Kofile performs negative Photostat polarity reversal (so that all characters are black on a positive background). The document certification strip (file strip) is inverted to match the polarity of the final image.

If requested, annotations are supported to allow the addition of Name, Book Type, Volume, and Page on the image. Image quality metadata is captured as part of the image header along with a secured digital signature that certifies the fidelity and integrity of every image scanned.



Examples of imaging before (L) and after (R) advanced image cleanup and enhancements.

Quality Control (QC)

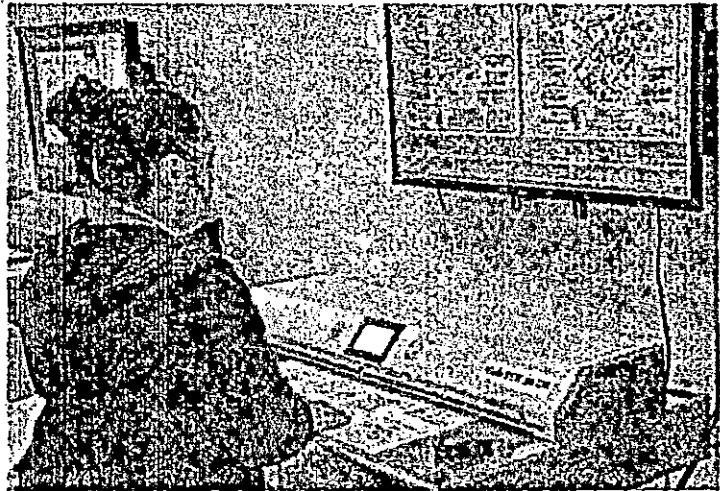
Our Quality Control (QC) process ensures that all images are certified. **Each image is sight checked during QC.** Each page is checked to ensure there are no missing pages, double feeds, or "A" pages, which may have been added. Every image is inspected and a statistical, random, batch-based review of 8% of the inventory is conducted before delivery. Upshur County Clerk can receive an image log noting the steps employed.

Advanced Equipment

Kofile can scan mixed-sized and large-format documents. Kofile employs a range of scanners to tailor imaging services to the document that requires imaging. All of scanners employ page detection to adjust for varying sizes of paper and, more importantly, thicknesses to reduce "pull-throughs" on thin papers following thick bond. Fragile documents are imaged by hand and not fed through an automated Document feeder. Kofile's technicians are trained to handle fragile documents.

WideTek

This wide-format duplex scanner digitizes two-sided printed documents up to 36" in width. The scanner needs only 2.5 seconds to scan both sides of the page in a single pass at a resolution of 300 dpi. This scanner ensures the best possible gentle document transport and digitizes historical and fragile documents without damage to the source document.



ARCHIVAL INDEXING

Data integrity is essential. Kofile's proprietary indexing software and keying procedures is proven 99.25% accuracy.

Prior to indexing, Kofile conducts a comprehensive assessment of Upshur County Clerk's indexing specifications to ensure accurate and consistent indexes, guaranteeing quick searches for users.

During the assessment, Kofile documents established methods of indexing specific instruments, clarifying terminology, and the standards used to enter names, dates, and other basic required information. This analysis differentiates the following:

- Cross-indexed documents
- Differentiation between individual names & corporation names
- Government departments & agencies
- Alternate & alias names
- Abbreviations, titles, & naming consistency (e.g., hyphens, nos., spaces, & suffixes)

Kofile's quality control procedures (QC) ensure that managers and supervisors internally research and answer questions about any problematic process. Kofile will contact Upshur County Clerk for any clarification and/or decisions needed. Client involvement demonstrates Kofile's pride in building successful professional relationships.

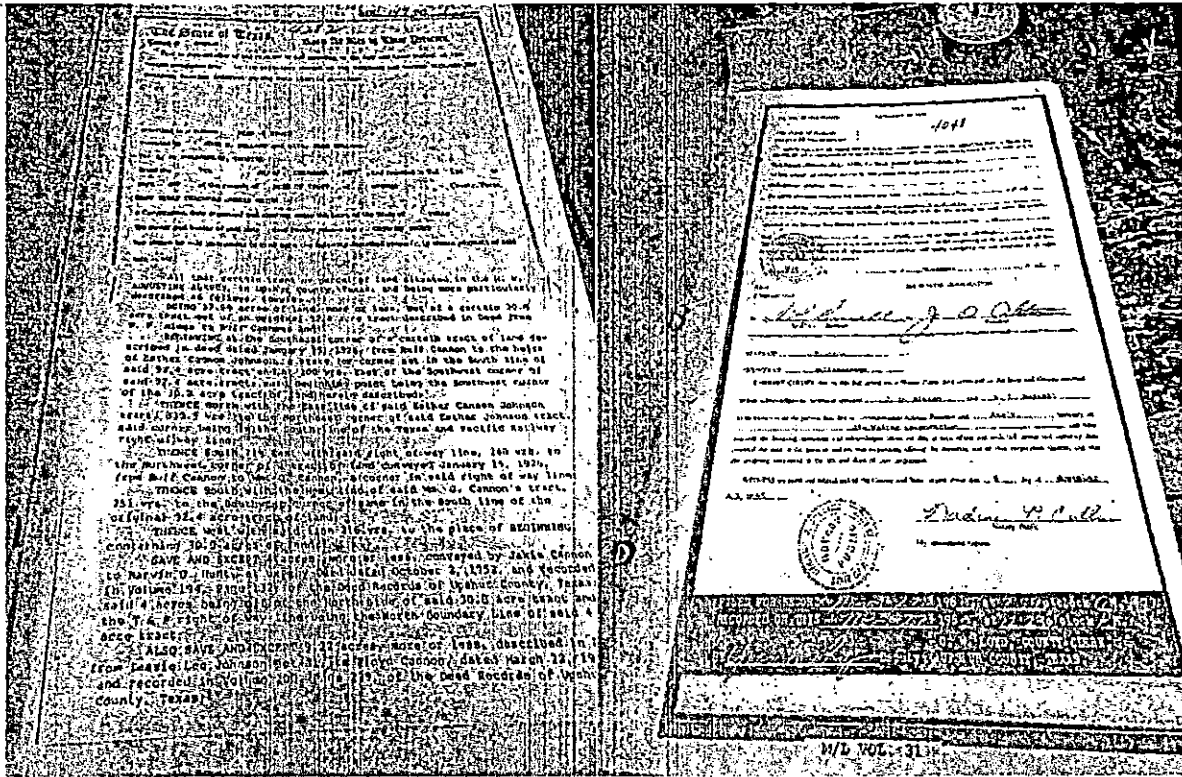
Data Entry Procedures

Consistently keyed fields will improve document retrieval and build a dependable, searchable database. To accomplish this, two technicians separately key the same entry for every field. Software is then utilized to ensure those separate entries match. Fields that do not match are sent to a supervisor to determine the issue, after which the entry is sent to a third technician to key a final time. With this methodology, each field is blind-keyed at least twice, and up to three times.

Any amendments are communicated with Upshur County Clerk via an exception list. Some exceptions are to be expected as not all records contain all fields noted. Kofile will establish rules for these abnormalities once the project commences.

PHOTOGRAPHIC DOCUMENTATION





SCOPE OF SERVICES

General treatments and services are outlined in the following. Services are tailored to the needs of the specific item.

Image—Archival Image Capture, Image Processing, Clean Up, & Enhancements (IM)

- Capture images at a minimum of 300 dpi at 256 gray levels, ensuring the highest quality for poor contrast and legibility. Gray-scale ensures optimum resolution for each page.
- Images accumulate as Group IV bi-tonal images in a standard PDF or TIFF format.
- IMAGE PERFECT, Kofile's proprietary software, ensures the optimum image quality with custom image clean up and enhancements such as deskew, despeckle, character repair, polarity reversal, and zonal processing.
- Crop excess blank space around image. This may involve manual cropping to insure best quality image.
- Images are named (tagged for the directory file structure) at case level by book, volume, and page (or other requested fields).
- Images are grouped (stapled) together to form documents. Cases are grouped and indexed to form documents by case number.
- Page Validation (automated PG. numbering for validation).
- If applicable, images are optimized and scaled for system output.
- If requested, annotations are supported to enable the electronic addition (either custom or Book/Volume/Page) on the digital image to assist in recording keeping.
- When multiple documents (Deeds, Birth Record, etc.) exist on a single page, images are split so that each document is viewable individually. In the case of Vitals, this service incurs additional charges.

- **STITCHING:** If identified, images receive stitching where necessary, such as entries that horizontally span the length of more than one page. Amendments are stitched to the appropriate Certificate and indexed in place of the original Certificate.
- Upshur County Clerk receives a MASTER (e.g., CD, DVD, ftp, flash drive) in a medium suitable to the project size.
- Kofile can hold a security copy of all images for safekeeping.

Archival Indexing (ID)

- Key and blind re-key verify documents.
- Formatting of metadata (indexes) per the requirements of the County's System vendor.
- If requested, Kofile can provide a Disaster Recovery electronic offsite backup of metadata.
- Indexing fields, as applicable, and identified here:
 - Grantor
 - Grantee
 - Recorded date
 - Document type
 - Legal description

PROJECT PRICING

Without a signed agreement, prices are good for 90 days. Pricing is based on estimated page counts and condition levels. Pricing is finalized upon review at the Kofile lab. Billing occurs on actuals per mutually agreed upon pricing, not to exceed the P.O. without authorization.

| Upshur County Clerk | | | | | | | |
|----------------------|---------|-----------|------------|-------------|---------------------|---------------------|---------------------|
| Project Overview | | | | | | | |
| Document Type | Volume | Doc Count | Page Count | Format | Price / Doc | Price / Page | Total Price |
| Deed of Trust | 1 - 2 | 1,500 | 770 | Handwritten | \$1,410.00 | \$3,080.00 | \$4,490.00 |
| Deed of Trust | 3 - 160 | 133,340 | 67,870 | Typed | \$84,004.20 | \$210,397.00 | \$294,401.20 |
| Mechanic's Lien | 1 | 130 | 75 | Handwritten | \$122.20 | \$300.00 | \$422.20 |
| Mechanic's Lien | 2 - 61 | 47,030 | 25,699 | Typed | \$29,628.90 | \$79,666.90 | \$109,295.80 |
| PROJECT TOTAL | | | | | \$115,165.30 | \$293,443.90 | \$408,609.20 |

PAYMENT SCHEDULE & TERMS

- Kofile will process 25% of the project each year and is offering a correlating 4-year payment plan.
- Equal payments of \$25,538.08 are to be made every 90 days following work commencement.
- The final invoice is adjusted (up or down) to reflect the Final number of pages and documents.
- The County can provide additional funding to this, or other projects, over the term of the contract.

| Year | Payment | Balance |
|--------------|--------------|--------------|
| Project Cost | | \$408,609.20 |
| Year 1 | \$102,152.30 | \$306,456.90 |
| Year 2 | \$102,152.30 | \$204,304.60 |
| Year 3 | \$102,152.30 | \$102,152.30 |
| Year 4 | \$102,152.30 | \$0.00 |

This proposal shall be governed by the terms of use found at <https://kofile.com/termsandconditions>.

CUSTOMER ACCEPTANCE



Signature of Authorized Official

TODD TEFTCEKER

Print Name of Authorized Official

UPSHUR CO. JUDGE

Title of Authorized Official

9-15-2022

Date

KOFILE ACCEPTANCE

Signature of Authorized Official

Print Name of Authorized Official

Title of Authorized Official

Date

ACCESSIBILITY OF RECORDS

Records held at Kofile are maintained as private and confidential material. Upshur County Clerk is guaranteed access to records via email or toll-free fax at our expense. Upon receipt of a records request, Kofile will flag the requested record and verify inventory control, pull supporting paperwork, and email/fax a response to the approved requester or alternate. The turnaround time for a records request will meet or exceed requirements.

Please note that all records (including volumes, documents, digital images, metadata or microfilm) serviced by Kofile shall remain the property of Upshur County Clerk. This policy applies to any agreement, verbal or written, between Upshur County Clerk and Kofile.

The records are not used by Kofile other than in connection with providing the services pursuant to any agreement between Kofile and Upshur County Clerk. The records are not commercially exploited by or on behalf of Kofile, its employees, officers, agents, invitees or assigns, in any respect.

Please let me know if you have any questions. We look forward to serving Upshur County Clerk and to working together for the preservation and access of its public and historical assets.

Sincerely,

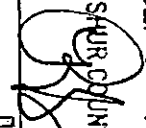
Stacy Cortesano



c: (972) 984-8508

e: stacy.cortesano@kofile.com

rac

FILED
TERRI ROSS
COUNTY CLERK
2022 SEP 15 PM 4:09
BY 
UPSHUR COUNTY, TX.
DEPUTY